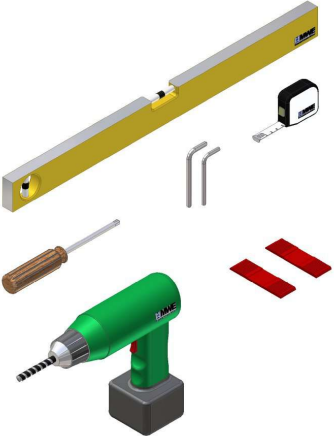
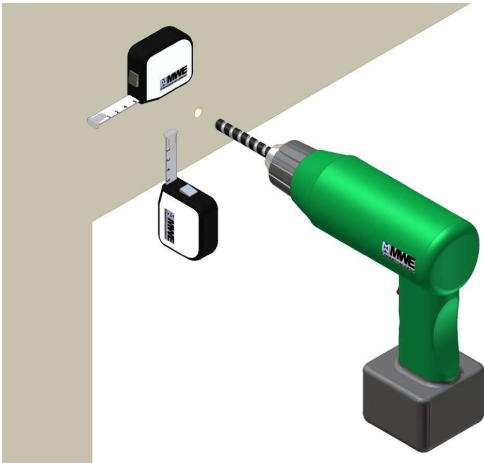
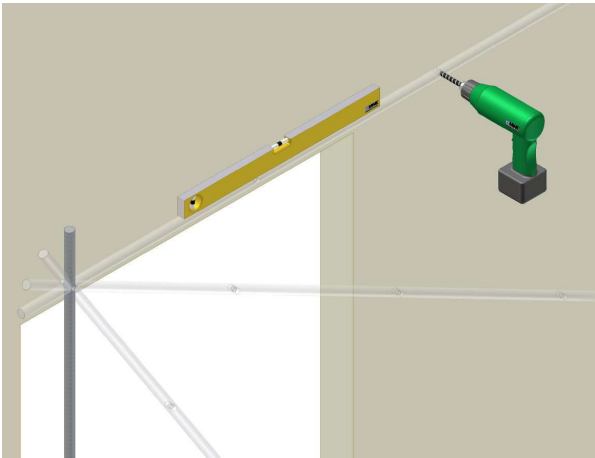


Installation Instruction

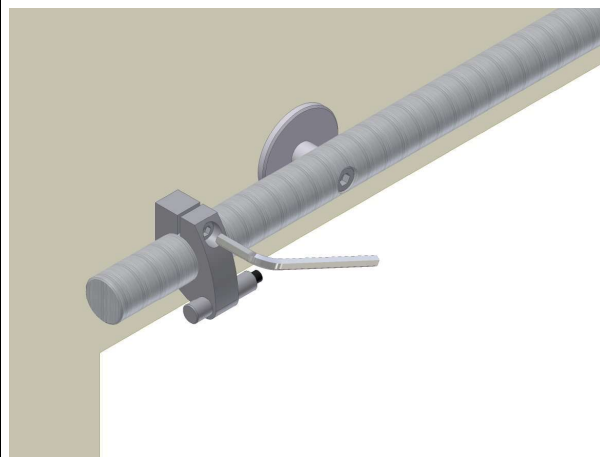
MWE Rebel Ladder



 A collection of tools laid out on a white background. From top to bottom, left to right: a yellow spirit level, a black folding measuring tape, two silver Allen keys, a green cordless drill with a black base, a wooden-handled screwdriver, and two red rectangular fasteners.	<h2>Tools</h2> <ul style="list-style-type: none">- Water level- Measuring tape / folding meter- Drill machine- Masonry drill $\varnothing=6\text{mm}$ / $\varnothing=8\text{mm}$ or wood drill- Crosstip screwdriver- Allen key set- Wrench <p>Please read safety instructions before drilling!</p>
 A green cordless drill is shown drilling a hole into a light-colored wall. A black folding measuring tape is held against the wall to the left of the drill, indicating the height and position for the hole.	<h2>1</h2> <h3>First wall drilling</h3> <p>Please use the water level to determine the highest point from finished floor before start drilling the first wall hole. Mark the height from finished floor to center line of the track and the lateral clearance at this point. The first wall drilling can be done now.</p>
 A green cordless drill is shown drilling a hole into a wall. A yellow spirit level is placed horizontally against the wall, resting on a metal track that is already partially installed. The drill is positioned to drill a hole through the track and into the wall.	<h2>2</h2> <h3>Further wall drillings</h3> <p>Assemble outer wall fasteners for the track loosely (see step 4). Put the track in horizontal position by using the water level. Use the track as your “drilling template” to drill all necessary fastening holes with 8 mm drill. Use 10 mm drill to widen the holes for anchors.</p>

Installation Instruction

MWE Rebel Ladder

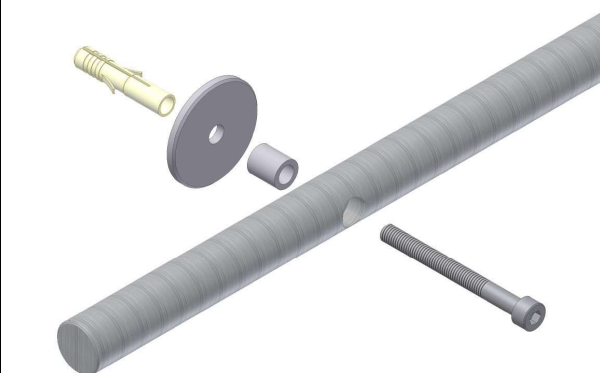


3

Installation of the end stops

Fix the ladder stops at the left and right end of the track to prevent the ladder from rolling off the track during further installation.

NOTE: Rebel Hook does not require this step



4

Track assembly to the wall

Use enclosed mounting materials to fix the track to the wall or a cabinet.



5

Hinging the ladder

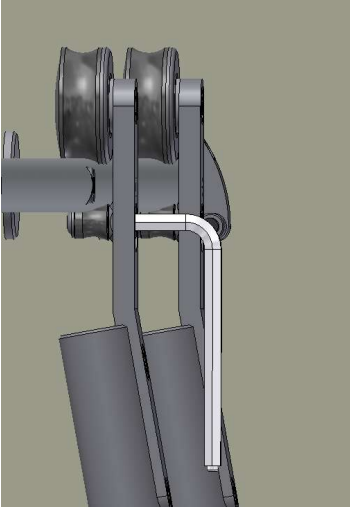
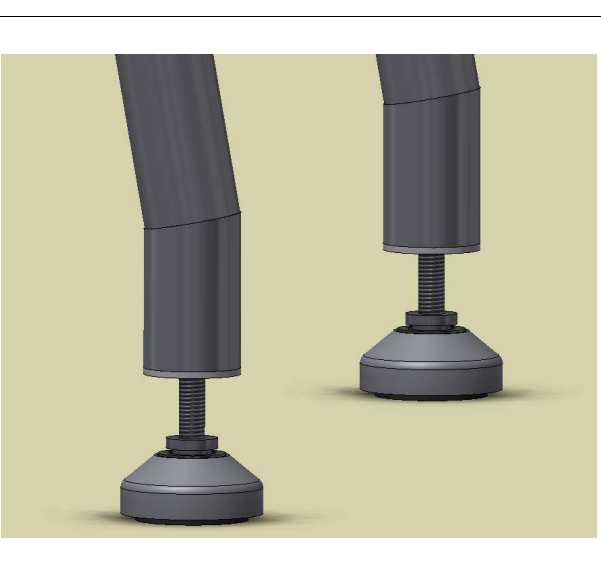
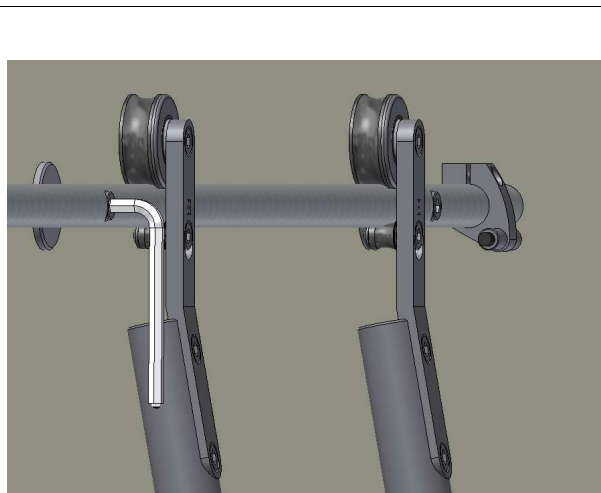
Please loosen and detach the safety pin. Hang in the ladder on the track. This step is the same for all sliding ladder types.

NOTE: Rebel Hook does not require this step

Installation Instruction

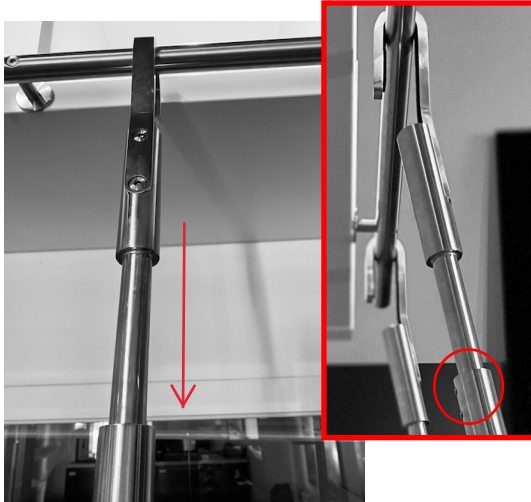
MWE Rebel Ladder



	<p>Illustration for ladder types: Rebel Sliding</p>	<h2>6</h2> <h3>Assembling the safety pin</h3> <p>Screw in the safety pin into the wheel. Put the safety pin underneath the track the way it enfolds the track slightly. (Explanation: The ladder might block, if the safety pin is installed too tight.) Please consider the smallest possible gap between the safety pin and the track. Only doing so you will prevent the ladder from jumping off the track.</p> <p>NOTE: Rebel Hook does not require this step</p>
	<h2>7</h2> <h3>Adjusting the ladder feet</h3> <p>Asperities of the finished floor can be cleared by adjusting the ladder feet. Please tighten the nuts when you finished adjusting. Globe joint inside the ladder foot aligns with the floor and provides a safe hold.</p>	
	<h2>9</h2> <h3>Tighten the bolts</h3> <p>When installation is finished make sure that every single bolt is once again securely tightened!</p>	

Assembly Instruction

MWE Rebel Ladder



1

Insert ladder head into ladder into stringer

With the set screws on the stringer positioned to be on the back (wall side or shelf side) carefully slide the ladder head into the stringer.

Place the ladder on the installed rail, carefully leaning the ladder into a proper 10° angle (*for ladders with flat SL.6013.KL steps position ladder on the rail with steps level to the floor, this ensures a proper 10° angle has been achieved*)



2

Tighten the set screws

With a proper 10° angle established, tighten the set screws.

Hook ladders can also be stowed in an upright position while on the rail!